

COREtec[®]

the Original

the
essentials
collection

EN

SK - PL - RU - HU - CZ - LT



FROM ONE TRUE ORIGINAL TO ANOTHER, IT'S A FAMILY AFFAIR!

What's in your *core*?

The real values in life are those created and found within families; authenticity, trust and the opportunity given to be creative and express yourself. These same values drive our company and they define our corporate culture.

We saw an opportunity to create a better floor. We chased a dream and created a whole new category along the way. As the innovators of COREtec®, the Original, 100% waterproof floor, we did just that. Stylish, strong floors that sustain real family lives full of entertaining, kids and pets.

Click, lock, enjoy. It is as simple as that!

It all began as an entrepreneurial business in 2001, within our founder's heart and spare bedroom as our "headquarters". With the invention of COREtec®, the original, patented, 100% waterproof floor in 2013, we grew rapidly to become the leading brand of these unique and highly innovative products.

We launched our European division in 2016 and that same year were acquired and embraced into the family of Shaw Floors, an industry leader and subsidiary of Berkshire Hathaway, led by the world-renowned investor, Warren Buffett.

We've come a long way from where we started to where we are now. But those family values guide us still. Led by management and embraced by every employee, dealer, and partner, we are recognized as the problem-solvers, innovators and design enthusiasts. Today we offer an incredible range of resilient, durable floors that can be purchased, installed and lived upon in one single day. Click, lock, enjoy. It is as simple as that!

The most difficult task will be to choose from our wide variety of life-like decors. But don't worry, you are sure to find one to match your style because we have a floor for every personality.

**WELCOME TO OUR FAMILY,
WE PROMISE TO REMAIN AUTHENTIC TO THE CORE**

Your COREtec® floor

Always fits your style & stands up to real life, it's engineered for simplicity.



Always fits your style

We have a passion for providing a wide selection of authentic natural looks, so you can express what makes you, you. Persistent in product innovation – including micro-beveled edges, enhanced painted bevels & Embossed in Register technology – we create the most appealing designs & textures available.



Stands up to real life

Our floors are 100% waterproof, kid proof & pet proof. Try them in your kitchen or bathroom: they won't warp or buckle, even if submerged in water.

Our 100% waterproof core, resilient vinyl and protective wear layer will keep your floor looking good for the life of your home. So naturally, all COREtec® floors come with a limited lifetime residential warranty.



Is engineered for simplicity

COREtec® is easy to install, to care for and to live with. Its secure angle tap system doesn't require any glue or nails and can be installed over existing floors without additional underlayment.

Forget about sanding, polishing, sealing or refinishing: our floors are maintenance-free.



There's a million reasons to choose COREtec®, but here's our top 6.

Our floors:

- ✓ Are extremely stable
- ✓ Reduce noise
- ✓ Are wear resistant
- ✓ Do not need to acclimatise
- ✓ Are suitable for underfloor heating & cooling
- ✓ Install on any surface




Cork

the natural choice

All our floors have a unique attached cork underlayment. Why? It's warmer, quieter and easily installs over existing hard surfaces, perfectly concealing imperfections in subfloors. And: it's one of the most sustainable materials out there. Cork is harvested from the cork tree and can be re-harvested every decade without damaging the tree.

A natural solution that brings only benefits to your home or business:

-  Added sound insulation
-  A comfortable and warmer floor
-  A natural protection against mold and mildew
-  No need for separate underlayment
-  Absorbs subfloor imperfections



COREtec[®] floors are
that good, somebody else
can re-*enjoy* it.

At COREtec[®] Floors, we attach great importance to sustainability. Recycling our multilayer, multicomponent material has a high energy cost, which means that a circular solution with re-use of the flooring is more appropriate. That's why we come up with an environmentally friendly solution: to set up Second Life floors, based on infinite re-use, an approach which is unique in our sector.

As the architects of multilayer waterproof rigid flooring, we are the first manufacturers to set up a take-back service, giving used flooring a new lease of life. These Second Life floors will initially be offered to charitable bodies and youth organisations. Our new service also has a societal dimension, as the business we call on to clean the used flooring employs people with complex barriers to work. They will use specially developed ecologically friendly COREtec[®] products to clean the dismantled flooring, making the old flooring look as good as new.

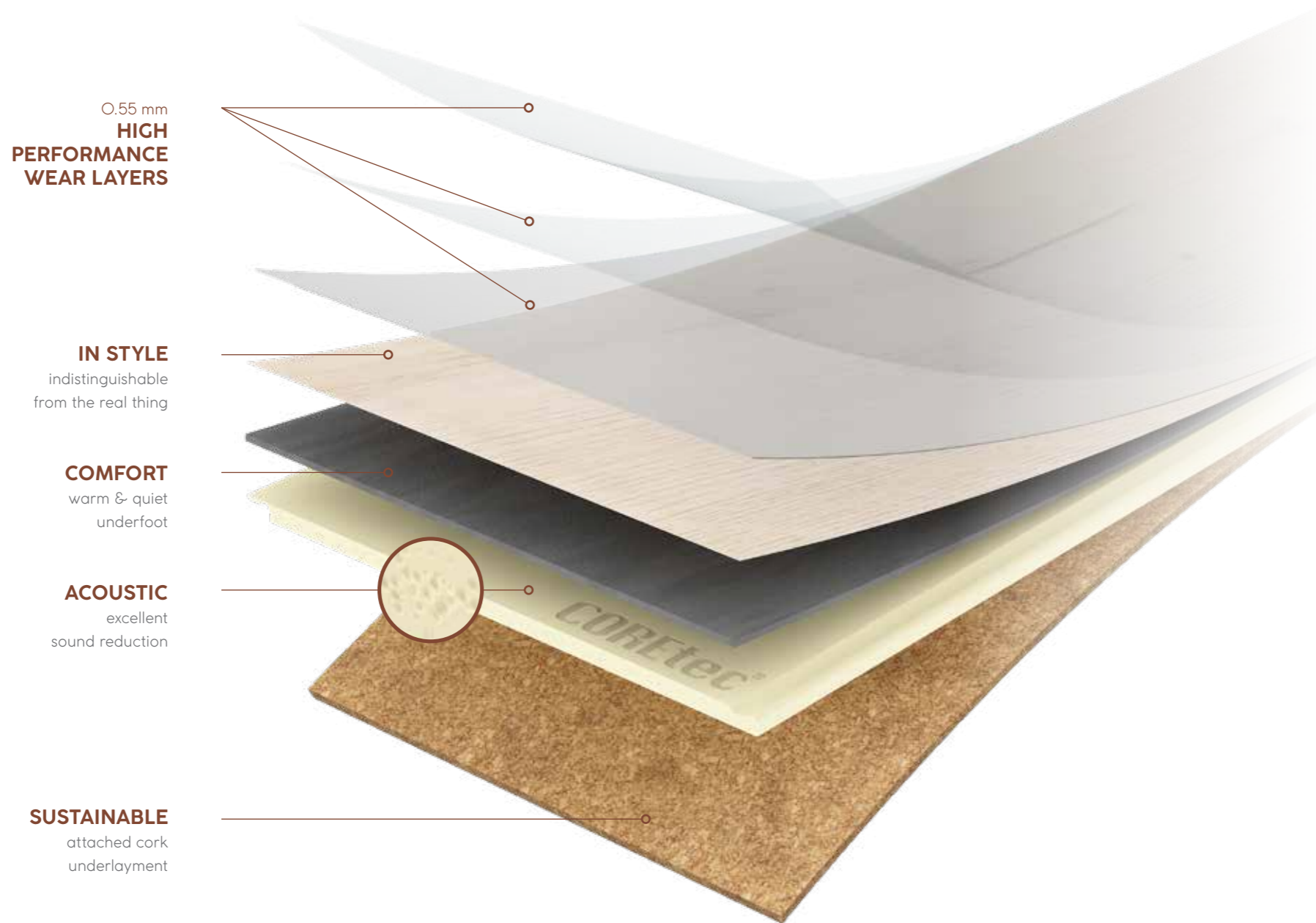
Thanks to Second Life, your old floor gets a real second chance. And therefore you also contribute to a more sustainable world!



SOUND CORE®

Silent & strong, down to the *core*

At COREtec®, we're proud to offer the most complete collection of 100% waterproof floors, so you can express what makes you, you.



0.55 mm
**HIGH
PERFORMANCE
WEAR LAYERS**

IN STYLE
indistinguishable
from the real thing

COMFORT
warm & quiet
underfoot

ACOUSTIC
excellent
sound reduction

SUSTAINABLE
attached cork
underlayment



100% waterproof



Extremely stable



No acclimatisation necessary



Easy to install



Installation on any surface



Reduces noise



Wear resistant



Pet proof



Electrostatic performance



Ideal for underfloor heating & cooling

The charm of *nature*

With nature as our main source of inspiration, we succeeded in creating a floor that captures the essence of your home. Whether you prefer soft earth tones or warm darker colours, our wide selection of authentic looks provides the perfect solution for every interior. Make a strong statement by relying on nature.

The new COREtec[®] Essentials collection comes with inviting designs, natural textures and a touch of class.



Baltimore Oak 66-50-LVRE-1266

has never been so *strong*



Painted Oak 99-50-LVPE-1399

the
essentials
collection



A wide range of *designs*
matching your interior



the
essentials
collection



1800 Series p.18 | **1500 Series** p.34 | **1200 Series** p.46

8 mm | 8,5 mm | 8 mm | 8,1 mm | 8,5 mm | 8 mm

0.55 mm (EN ISO 24340)

6 pcs 2.50 m² 21 kg | 6 pcs 1.97 m² 18 kg | 6 pcs 2.50 m² 21 kg | 6 pcs 2.50 m² 21.33 kg | 6 pcs 2.05 m² 19.5 kg | 6 pcs 1.62 m² 15.41 kg | 10 pcs 2.20 m² 18 kg | 12 pcs 2.65 m² 23 kg

the *essentials* collection



Multi Series p.60 | **Herringbone Series** p.64 | **Tile Series** p.68

8 mm | 8 mm | 8 mm

0.55 mm (EN ISO 24340)

10 pcs 2.62 m² 23.50 kg | 12 pcs 2.50 m² 21 kg | 6 pcs 2.18 m² 18.79 kg | 8 pcs 2.23 m² 18.69 kg | 9 pcs 2.58 m² 23.63 kg

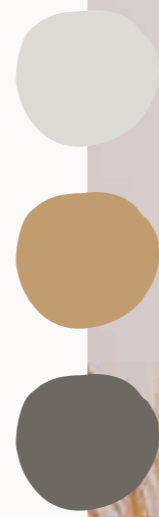
What about:

Has bevels on the long sides of the plank.

Has bevels on the long & short sides of the plank.

The embossing follows the structure of the wood for a real-life touch.

The charm of *nature* has never been so *strong*



1800
SERIES

- 1830 x 228 x 8,1 mm
- 1830 x 228 x 8 mm
- 1830 x 180 x 8,5 mm

Minnesota Ash O3 - 50-LVPE-2103



FREMONT OAK 82

50-LVRE-2282
1830 x 228 x 8 mm



FREMONT OAK 93

50-LVRE-2293
1830 x 228 x 8 mm





MUNSTER OAK 88

50-LVRE-2388
1830 x 228 x 8 mm



MUNSTER OAK 53

50-LVRE-2353
1830 x 228 x 8 mm





GREYSTONE CONTEMPO OAK 34

50-LVR-634

1830 x 180 x 8,5 mm



TIMBERLAND RUSTIC PINE 41

50-LVR-641

1830 x 180 x 8,5 mm





BALTIMORE
OAK 95
50-LVRE-1295
1830 x 180 x 8,5 mm



BALTIMORE
OAK 77
50-LVRE-1277
1830 x 180 x 8,5 mm



BALTIMORE
OAK 66
50-LVRE-1266
1830 x 180 x 8,5 mm



BALTIMORE
OAK 84
50-LVRE-1284
1830 x 180 x 8,5 mm





MINNESOTA ASH O3

50-LVPE-2103
1830 x 228 x 8 mm



DOBRA OAK 51

50-LVPE-951
1830 x 228 x 8 mm



TASMAN OAK 50

50-LVPE-950
1830 x 228 x 8 mm





WARWICK OAK 53
50-LVPE-953
1830 x 228 x 8 mm



ELLIS OAK 54
50-LVPE-954
1830 x 228 x 8 mm



UNITY OAK 57
50-LVPE-957
1830 x 228 x 8 mm

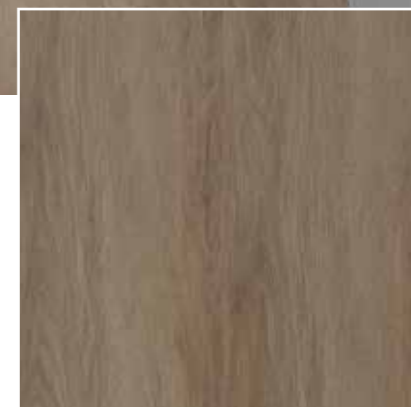




ALEXANDRIA OAK 14

50-LVP-614

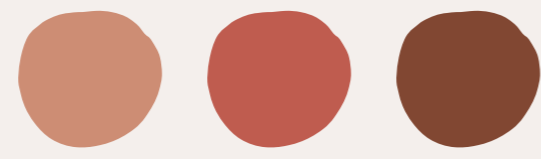
1830 x 228 x 8,1 mm



HIGHLANDS OAK 15

50-LVP-615

1830 x 228 x 8,1 mm



The charm of *nature* has never been so *strong*

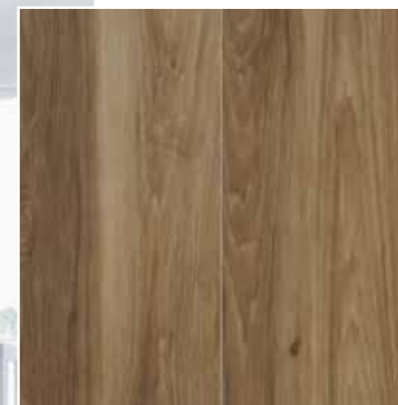
1500
SERIES

1500 x 228 x 8,5 mm
1500 x 180 x 8,5 mm



OCALA WALNUT 54

50-LVRE-2054
1500 x 228 x 8,5 mm



OCALA WALNUT 87

50-LVRE-2087
1500 x 228 x 8,5 mm



OCALA WALNUT 68

50-LVRE-2068
1500 x 228 x 8,5 mm





JASPER OAK 01
 50-LVR-9601
 1500 x 180 x 8,5 mm



CLEVELAND OAK 52
 50-LVRE-1452
 1500 x 228 x 8,5 mm



CLEVELAND OAK 86
 50-LVRE-1486
 1500 x 228 x 8,5 mm





BOSTON OAK O3

50-LVR-1903
1500 x 180 x 8,5 mm



BOSTON OAK 92

50-LVRE-1992
1500 x 228 x 8,5 mm



BOSTON OAK 78

50-LVR-1978
1500 x 180 x 8,5 mm





GREAT NORTHERN
OAK 05
50-LVR-9605
1500 x 180 x 8,5 mm



WATERTON LAKES
OAK 04
50-LVR-9604
1500 x 180 x 8,5 mm



PORTLAND OAK 72
50-LVR-1872
1500 x 180 x 8,5 mm





WIND RIVER OAK O6

50-LVR-8606

1500 x 180 x 8,5 mm



SPARWOOD OAK O6

50-LVR-9606

1500 x 180 x 8,5 mm



The charm of *nature* has never been so *strong*



1200
SERIES
1220 x 180 x 8 mm
1220 x 182 x 8 mm



ENCHANTED OAK 51

50-LVPE-751
1220 x 180 x 8 mm



RUSTLED OAK 50

50-LVPE-750
1220 x 180 x 8 mm





PAINTED OAK O2

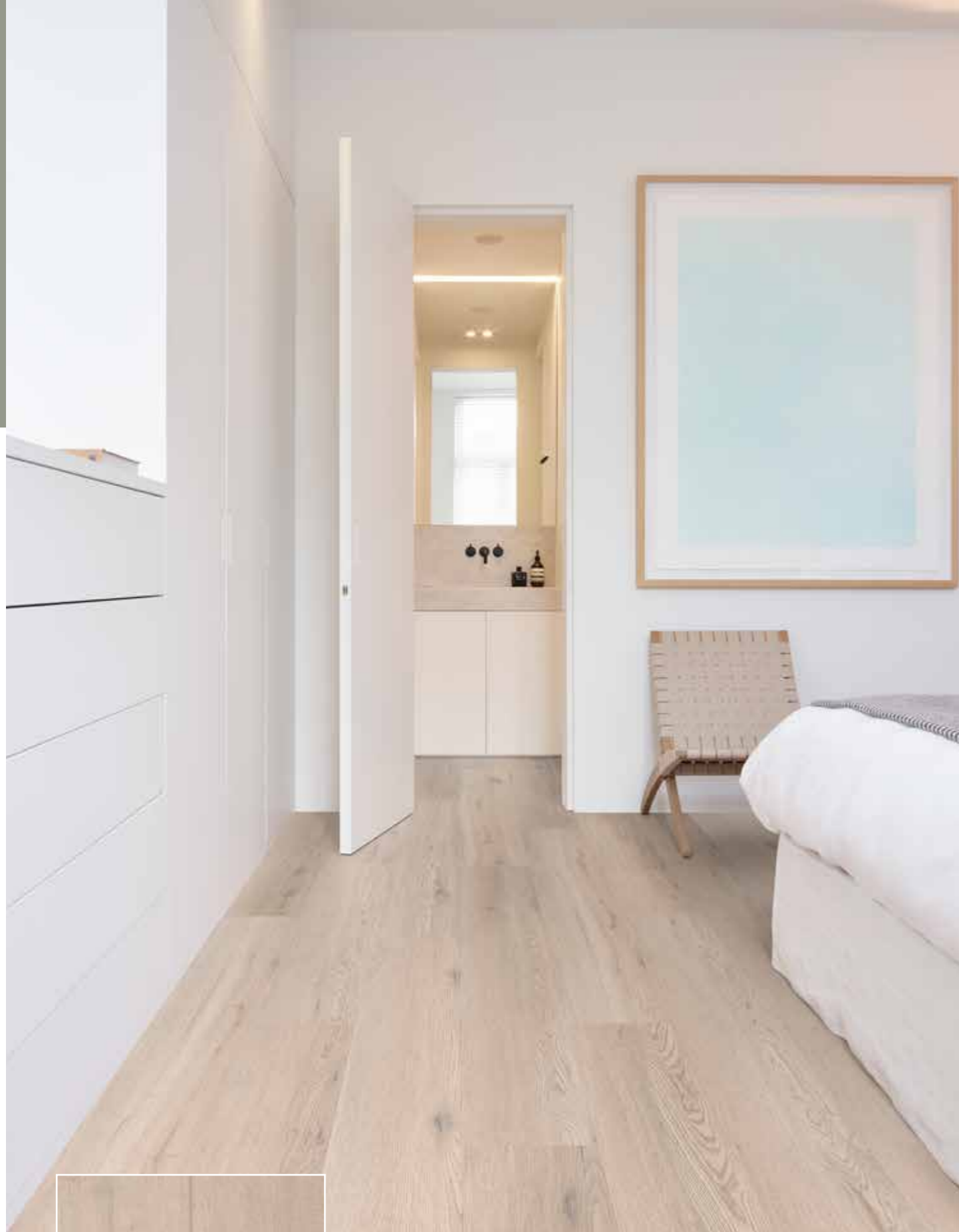
50-LVPE-1302
1220 x 180 x 8 mm



PAINTED OAK 99

50-LVPE-1399
1220 x 180 x 8 mm





CLEVELAND OAK 62

50-LVPE-1462
1220 x 180 x 8 mm



CLEVELAND OAK 94

50-LVPE-1494
1220 x 180 x 8 mm

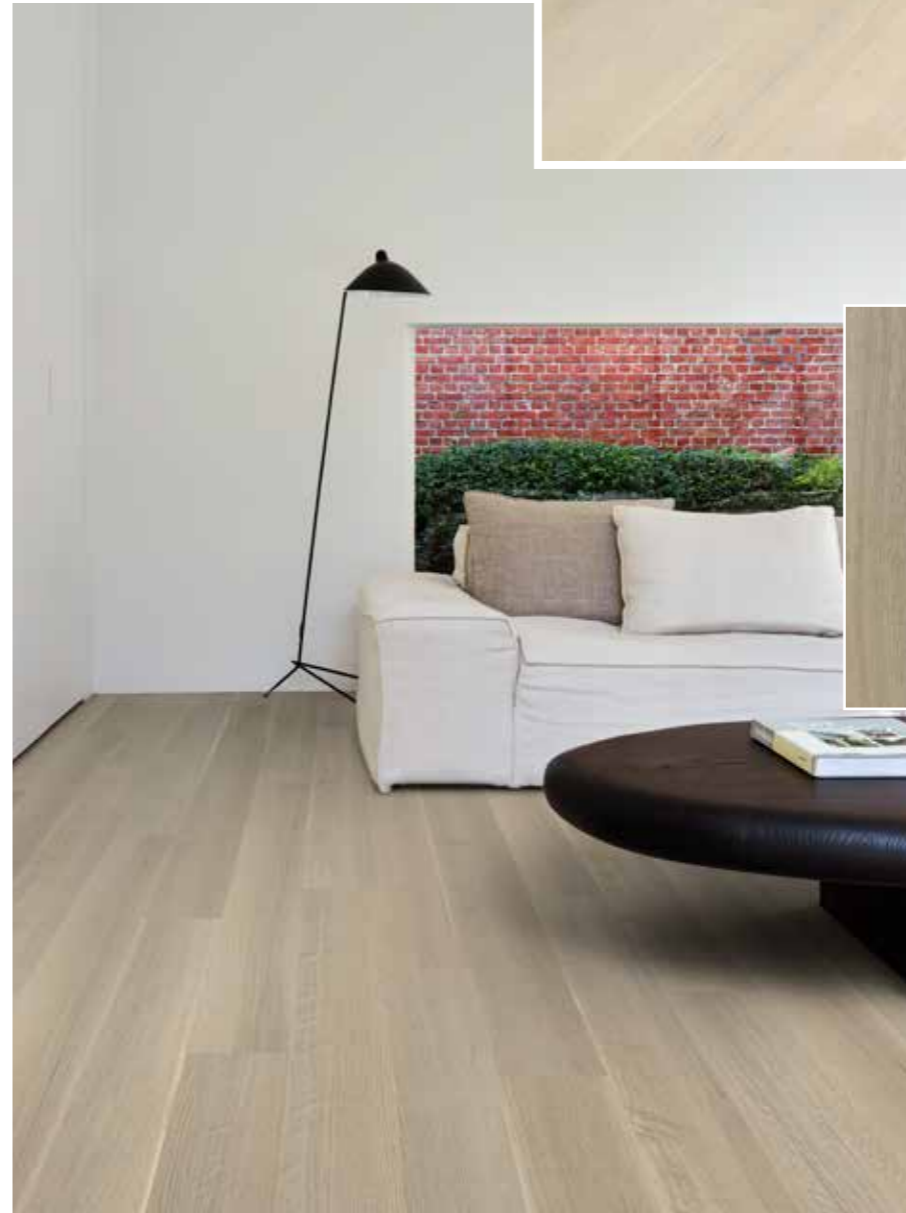




CHARLESTON OAK 53
 50-LVP-1153
 1220 x 182 x 8 mm



CHARLESTON OAK 72
 50-LVP-1172
 1220 x 182 x 8 mm



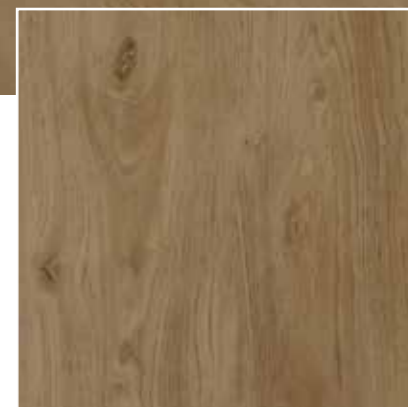
CHARLESTON OAK 78
 50-LVP-1178
 1220 x 182 x 8 mm



BLACKSTONE
OAK 07
 50-LVP-707
 1220 x 182 x 8 mm



FALLEN OAK 52
 50-LVP-752
 1220 x 180 x 8 mm



BALTIMORE OAK 54
 50-LVP-1254
 1220 x 182 x 8 mm



NANTUCKET OAK 11

50-LVP-211

1220 x 182 x 8 mm



IVORY COAST OAK 05

50-LVP-705

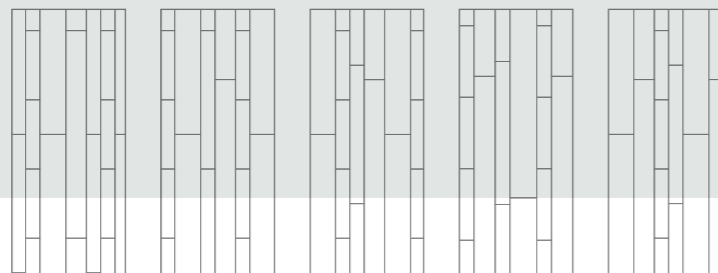
1220 x 182 x 8 mm



The charm of *nature* has never been so *strong*



Create
your own style



MULTI SERIES

1 box contains planks in following dimensions:
1830 x 228 x 8 mm 1220 x 126 x 8 mm
1830 x 181 x 8 mm 610 x 126 x 8 mm

Texas Oak M54-50-LVREM-2454



TEXAS OAK M54

50-LVREM-2454

610 x 126 x 8 mm
1220 x 126 x 8 mm

1830 x 181 x 8 mm
1830 x 228 x 8 mm



TEXAS OAK M71

50-LVREM-2471

610 x 126 x 8 mm
1830 x 181 x 8 mm
1220 x 126 x 8 mm
1830 x 228 x 8 mm



TEXAS OAK M86

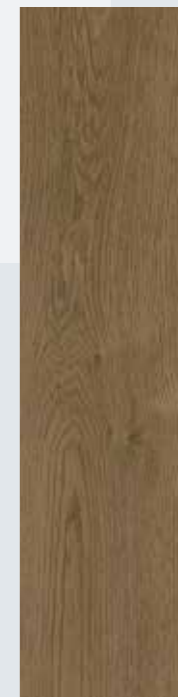
50-LVREM-2486

610 x 126 x 8 mm
1830 x 181 x 8 mm
1220 x 126 x 8 mm
1830 x 228 x 8 mm

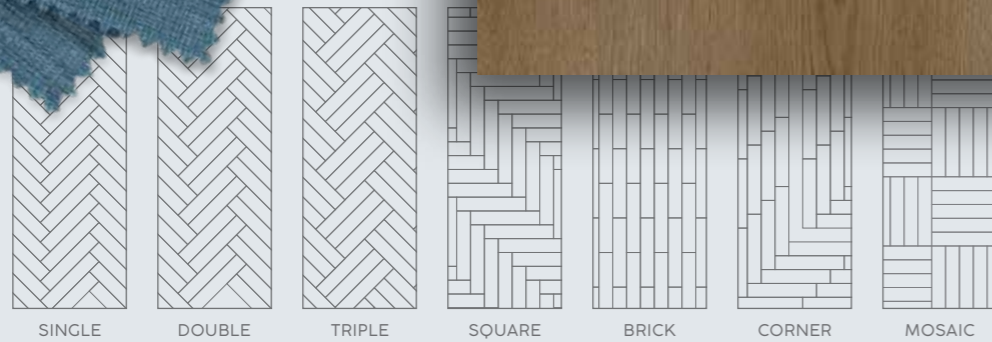




The charm of *nature* has never been so *strong*



Mix & match
your own style



HERRINGBONE SERIES

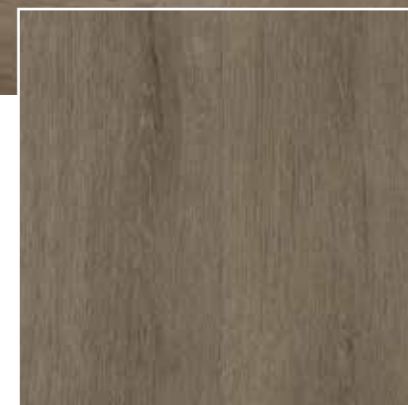
912 x 228 x 8 mm



TEXAS OAK H71
 50-LVRH-2471
 912 x 228 x 8 mm



TEXAS OAK H54
 50-LVRH-2454
 912 x 228 x 8 mm

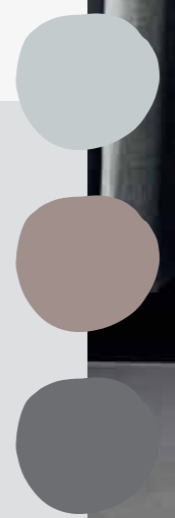


TEXAS OAK H86
 50-LVRH-2486
 912 x 228 x 8 mm





The charm of *nature* has never been so *strong*

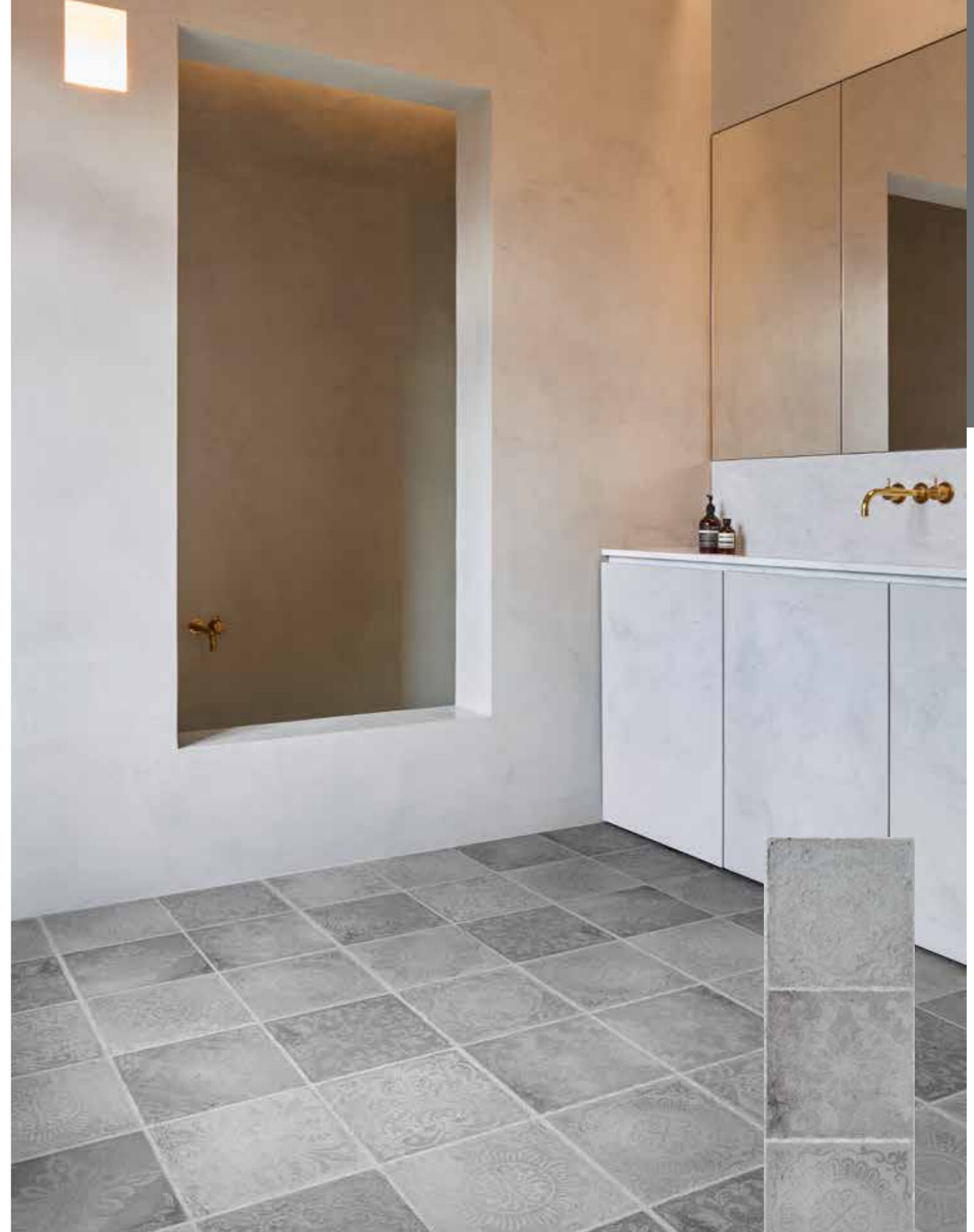


TILE
SERIES

- 610 x 457 x 8 mm
- 610 x 470 x 8 mm
- 1205 x 302 x 8 mm



RABAT 90
 50-LVT-1790
 1205 x 302 x 8 mm



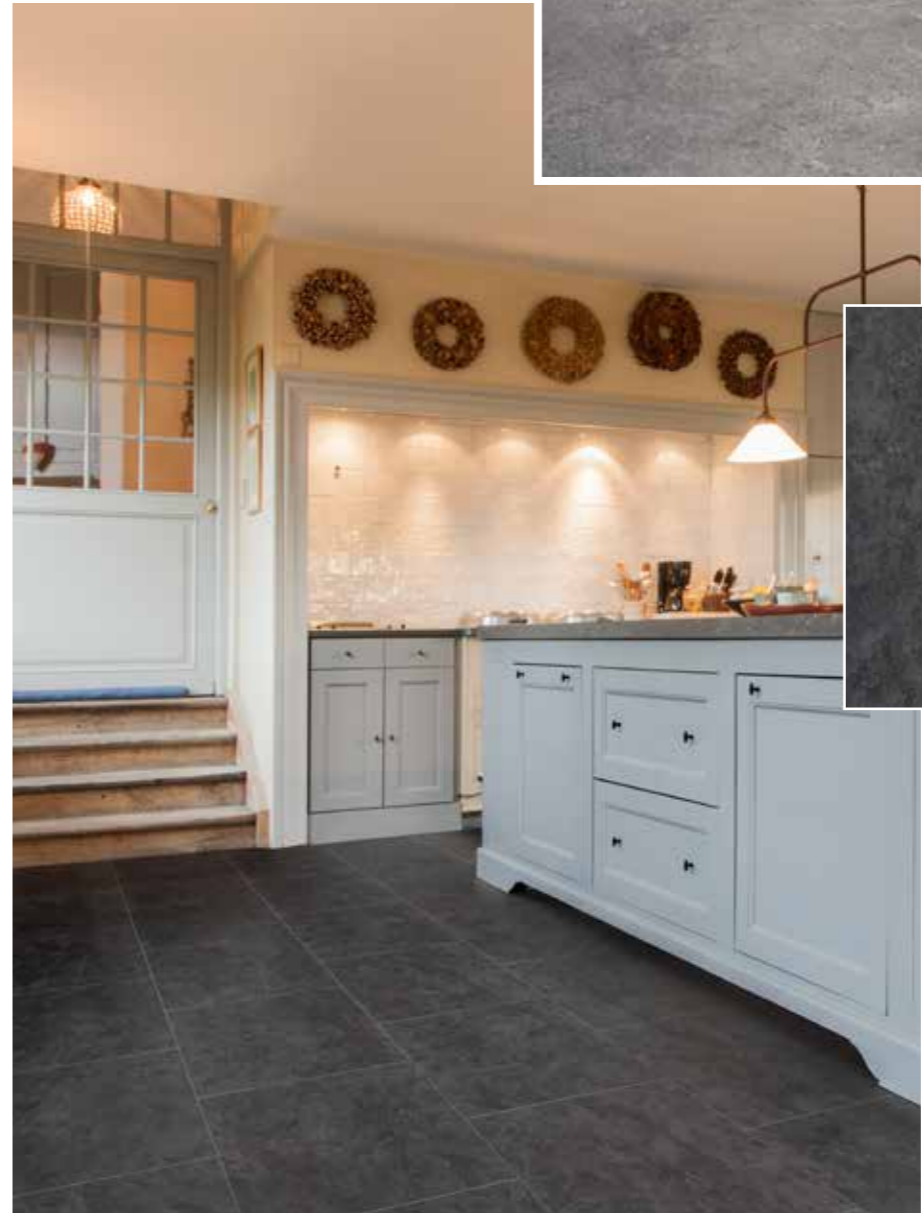
RABAT 94
 50-LVT-1794
 1205 x 302 x 8 mm



LYRA 57
50-LVTE-1857
610 x 457 x 8 mm



AQUILA 50
50-LVTE-1850
610 x 457 x 8 mm



MENSA 58
50-LVTE-1858
610 x 457 x 8 mm





COLUMBA 53
50-LVTE-1853
610 x 457 x 8 mm



VELA 54
50-LVTE-1854
610 x 457 x 8 mm



COSMIC COPPER 67
50-LVT-1567
610 x 470 x 8 mm





POLISHED CONCRETE 95

50-LVT-1695
610 x 470 x 8 mm



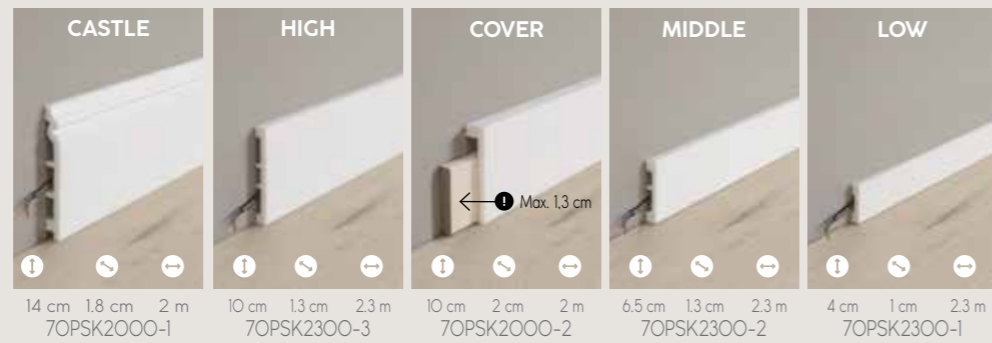
WEATHERED CONCRETE 03

50-LVT-1803
610 x 470 x 8 mm

Accessories

Paintable skirtings

Our paintable skirtings are 100% waterproof & shock resistant.

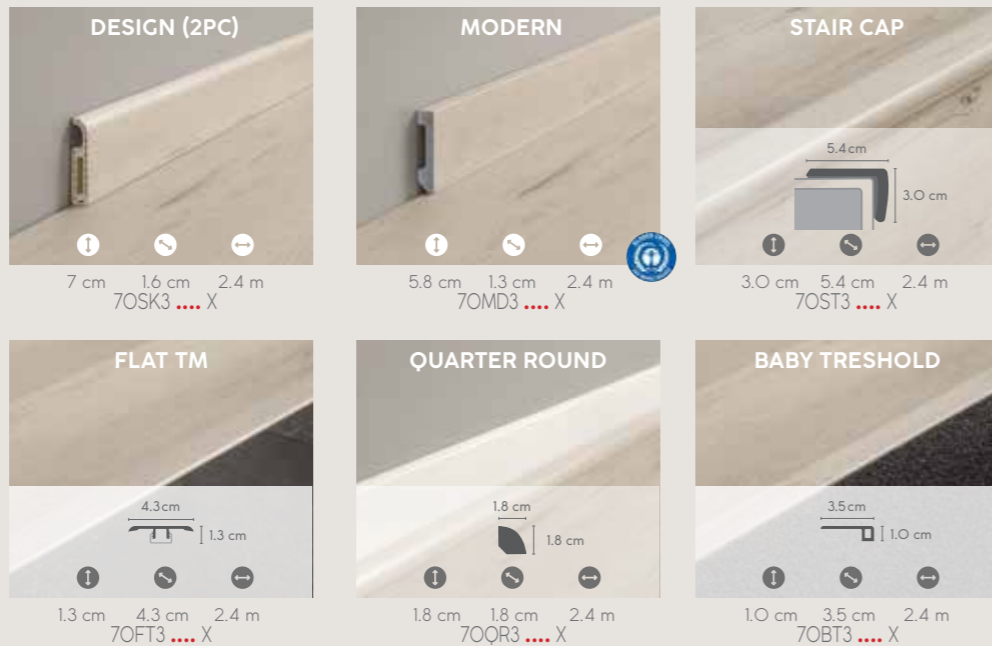


Matching design accessories

Our design accessories match the design of your floor & are also 100% waterproof & shock resistant.



! = Matching design reference

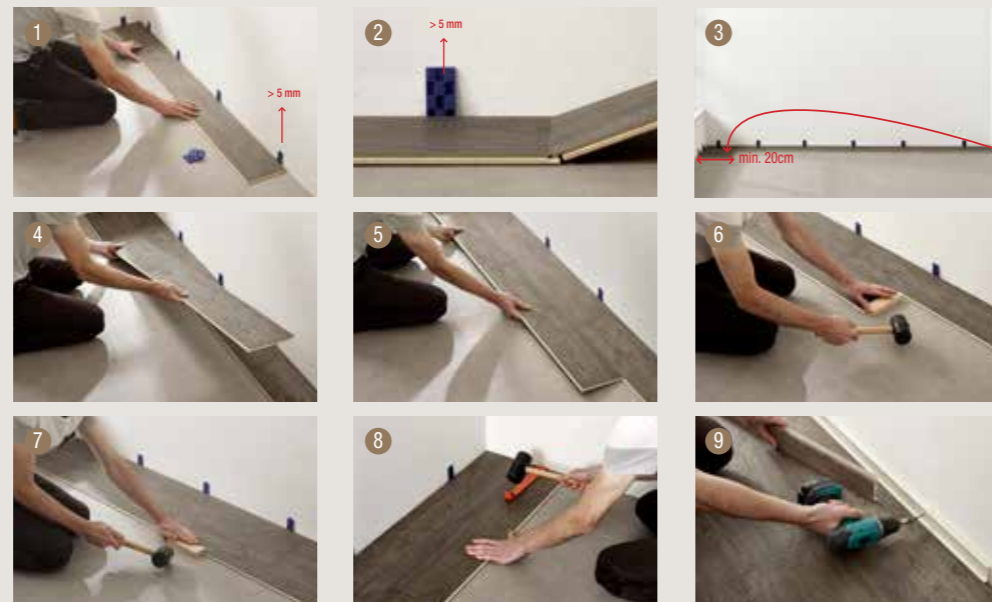


Installation

Easy to install

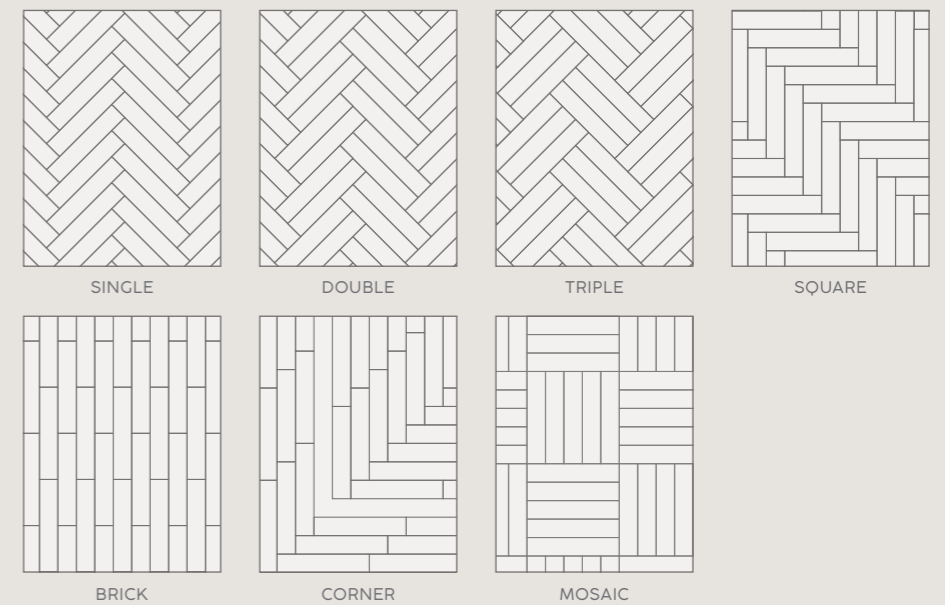
COREtec® floors have the easiest install on the market.

Follow the steps or watch our installation video on our website. www.coretecfloors.com



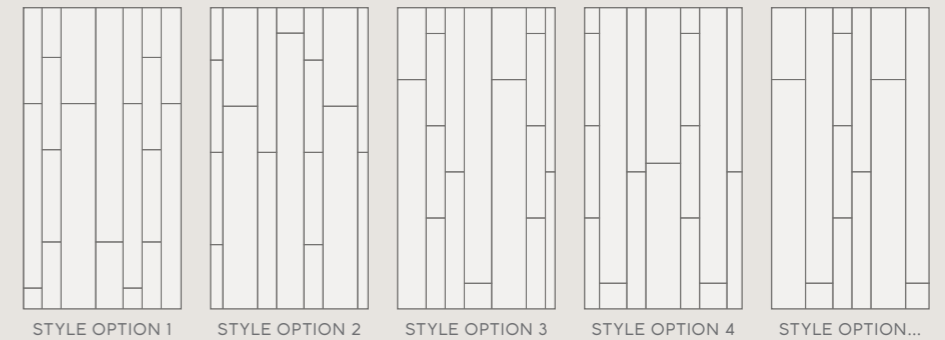
Herringbone Series variations

Mix & match your own style with the extra-large herringbone planks.



Multi Series variations

Create your own style with four different plank sizes. The layout you choose is completely up to you!



Maintenance

The COREtec® Clean, quick & green kit:

- Daily cleaner
- Deep cleaner
- Stain remover



Technical specifications

80

LEVEL OF USE

Úroveň použitia / Klasa ścieralności /
Класс использования / Európai besorolás /
Úroveň použití / Atsparumo klasė
Class 23 / 33 / 41 (EN ISO 10874)

GEOMETRICAL CHARACTERISTICS

Geometrické parametre / Charakterystyka
Geometryczna / геометрические
характеристики / Geometriai jellemző /
Rozměry / Geometrinės savybės
Conform (ISO 24337)

WEAR RESISTANCE

Odolnosť voči opotrebeniu / Wytrzymałość
na zużycie / износоустойчивость / Korásállóság /
Odolnost proti opotřebení / Atsparumas dilimui
Pass 4000 cycles (EN 13329 Annex E)

CASTOR CHAIR RESISTANCE

Odolnosť voči kolieskam na stoličke /
Odporność na krzesła obrotowe z kółkami /
Стойкость к креслам с роликами /
Görgös szék teszt / Odolnost vůči kolečkovým
židlým / Atsparumas kėdžių ratukams
Pass 25000 cycles (EN 425)

EFFECT OF FURNITURE LEG

Efekt z nôh nábytku / Wpływ nogi meblowej /
воздействие мебельных ножек / Bútorlábhatás /
Vliv nábytkové nožky / Baldų poveikis
No visible change (EN 16581)

RESIDUAL IDENTATION

Trvalá deformácia / Pozostałe wgniecenie /
остаточные вмятины / Megmaradó
benyomódás / Trvalá deformace / Likęs įdubimas
≤ 0.15 mm (EN ISO 24343-1)

RESISTANCE TO STAINING

Odolnosť voči napúšťaniu farbou /
Odporność na barwienie / устойчивость к
пятнообразованию / Foltállóság / Odolnost proti
vzniku skvrn / Atsparumas dėmėms
5 (no visible change) (EN 438-2)

LOCKING STRENGTH

Pevnosť pripojenia / Wytrzymałość blokowania /
прочность крепления / Záróerő / Pevnost zajištění /
Blokavimo jėga
LS ≥ 2.0 / SS ≥ 3.5 (EN 24334)

DIMENSIONAL STABILITY

Rozmerová stabilita / Stabilność wymiarowa /
Стабильность размеров / Méretstabilitás /
Rozměrová stabilita / Matmenų stabilumas
Pass ≤ 0.25% (EN ISO 23999)

COLOUR FASTNESS TO LIGHT

Stálosť farby na svetle / Odporność koloru
na światło / устойчивость окраски к свету /
színtartósság / Stálobarevnost na světle / Spalvų
atsparumas šviesa
> grade 6 (ISO 105-BO2)

IMPACT SOUND REDUCTION

Akustická izolácia / Izolacja akustyczna /
Звукоизоляция / Hangszigetelés / Akustická izolace /
Garso slopinimas
 $\Delta L_w = 20$ dB (ISO 10140-3 / EN 717-2)
 $\Delta L_{LIN} = 10$ dB (ISO 10140-3 / EN 717-1)

FORMALDEHYDE EMISSION CLASS

Formaldehydová skupina / Emisja
formaldehydu / Класс эмиссии
формальдегида / Formaldehyd csoport /
Formaldehydová skupina / Formaldehyde group
E1 (EN 717-1)

FIRE CLASSIFICATION

Klasifikácia voči požiaru / klasyfikacja
ogniowa / класс огнестойкости / tűzállósági osztály /
Požární klasifikace / Degumo klasifikacija
Bfl - S1 (EN 13501)

SLIP RESISTANCE

Protišmykovosť / Śliskość / Стойкость к скольжению /
Csúszásmentes / Protiskluznost / Slidumo klasė
DS - R10 (EN 13893 - DIN 51130)

UNDERFLOOR HEATING




Podlahové vykurovanie / Ogrzewanie
podłogowe / Полы с подогревом / Padlófűtésre /
Podlahové vykurování / Šildomos grindys
Suitable

ELECTROSTATIC PERFORMANCE

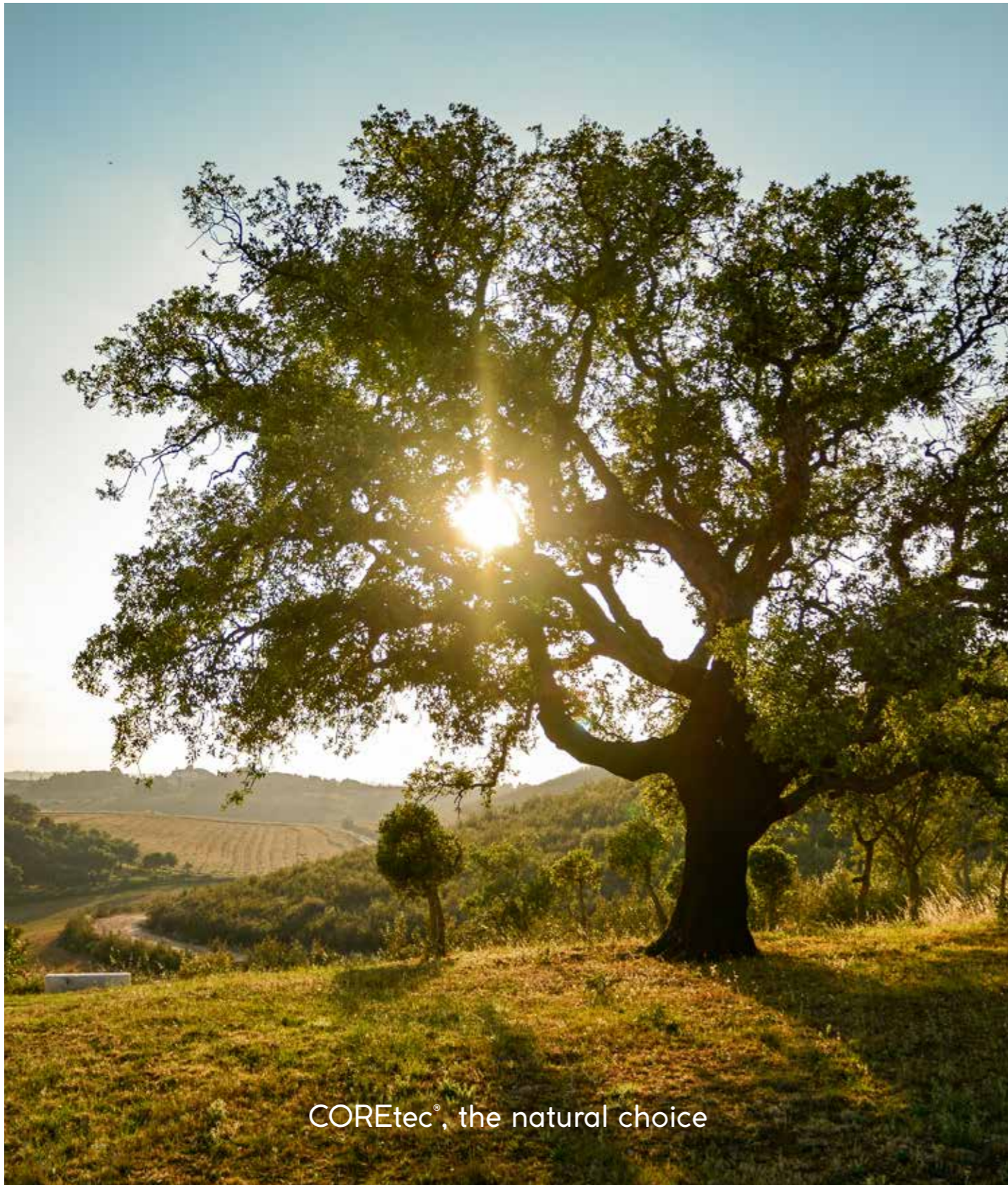
Elektrostatické prevedenie / Akumulacja ładunków
elektrostatycznych / Электростатичность /
Elektromos feltöltődés / Elektrostatické
provedení / Antistatiskumas
≤ 2 kV (EN 1815)

THERMAL RESISTANCE

Tepelná odolnosť / Odporność cieplna /
термостойкость / Hőállóság / Teplotní odolnost /
Terminis atsparumas
0.066 m²-K/W (EN 12667)

Series	Name	SQ Number	Length (mm)	Width (mm)	Thickness (mm)				Pieces/box	M ² /box	Weight box (kg)
1800+++	Fremont Oak 82	50 LVRE 2282	1830	228	8	●	●	●	6	2,5	21
	Fremont Oak 93	50 LVRE 2293	1830	228	8	●	●	●	6	2,5	21
	Munster Oak 53	50 LVRE 2353	1830	228	8	●	●	●	6	2,5	21
	Munster Oak 88	50 LVRE 2388	1830	228	8	●	●	●	6	2,5	21
1800++	Greystone Contempo Oak 34	50 LVR 634	1830	180	8,5	●	●	●	6	1,97	18
	Timberland Rustic Pine 41	50 LVR 641	1830	180	8,5	●	●	●	6	1,97	18
	Baltimore Oak 66	50 LVRE 1266	1830	180	8,5	●	●	●	6	1,97	18
	Baltimore Oak 84	50 LVRE 1284	1830	180	8,5	●	●	●	6	1,97	18
	Baltimore Oak 77	50 LVRE 1277	1830	180	8,5	●	●	●	6	1,97	18
1800+	Baltimore Oak 95	50 LVRE 1295	1830	180	8,5	●	●	●	6	1,97	18
	Dobra Oak 51	50 LVPE 951	1830	228	8	●	●	●	6	2,5	21
	Tasman Oak 50	50 LVPE 950	1830	228	8	●	●	●	6	2,5	21
	Ellis Oak 54	50 LVPE 954	1830	228	8	●	●	●	6	2,5	21
	Warwick Oak 53	50 LVPE 953	1830	228	8	●	●	●	6	2,5	21
1800	Unity Oak 57	50 LVPE 957	1830	228	8	●	●	●	6	2,5	21
	Minnesota Ash O3	50 LVPE 21O3	1830	228	8	●	●	●	6	2,5	21
1500+	Alexandria Oak 14	50 LVP 614	1830	228	8,1	●	●	●	6	2,5	21,33
	Highlands Oak 15	50 LVP 615	1830	228	8,1	●	●	●	6	2,5	21,33
1500	Boston Oak 92	50 LVRE 1992	1500	228	8,5	●	●	●	6	2,05	19,5
	Ocala Walnut 87	50 LVRE 2087	1500	228	8,5	●	●	●	6	2,05	19,5
	Ocala Walnut 54	50 LVRE 2054	1500	228	8,5	●	●	●	6	2,05	19,5
	Ocala Walnut 68	50 LVRE 2068	1500	228	8,5	●	●	●	6	2,05	19,5
	Cleveland Oak 86	50 LVRE 1486	1500	228	8,5	●	●	●	6	2,05	19,5
	Cleveland Oak 52	50 LVRE 1452	1500	228	8,5	●	●	●	6	2,05	19,5
1200+	Jasper Oak O1	50 LVR 96O1	1500	180	8,5	●	●	●	6	1,62	15,41
	Great Northern Oak O5	50 LVR 96O5	1500	180	8,5	●	●	●	6	1,62	15,41
	Waterton Lakes Oak O4	50 LVR 96O4	1500	180	8,5	●	●	●	6	1,62	15,41
	Wind River Oak O6	50 LVR 86O6	1500	180	8,5	●	●	●	6	1,62	15,41
	Sparwood Oak O6	50 LVR 96O6	1500	180	8,5	●	●	●	6	1,62	15,41
	Portland Oak 72	50 LVR 1872	1500	180	8,5	●	●	●	6	1,62	15,41
	Boston Oak O3	50 LVR 19O3	1500	180	8,5	●	●	●	6	1,62	15,41
	Boston Oak 78	50 LVR 1978	1500	180	8,5	●	●	●	6	1,62	15,41
1200	Rustled Oak 50	50 LVPE 750	1220	180	8	●	●	●	10	2,2	18
	Enchanted Oak 51	50 LVPE 751	1220	180	8	●	●	●	10	2,2	18
	Painted Oak O2	50 LVPE 13O2	1220	180	8	●	●	●	10	2,2	18
	Painted Oak 99	50 LVPE 1399	1220	180	8	●	●	●	10	2,2	18
	Cleveland Oak 62	50 LVPE 1462	1220	180	8	●	●	●	10	2,2	18
HER-RING-BONE	Cleveland Oak 94	50 LVPE 1494	1220	180	8	●	●	●	10	2,2	18
	Ivory Coast Oak O5	50 LVP 7O5	1220	182	8	●	●	●	12	2,65	23
	Blackstone Oak O7	50 LVP 7O7	1220	182	8	●	●	●	12	2,65	23
	Nantucket Oak 11	50 LVP 211	1220	182	8	●	●	●	12	2,65	23
	Fallen Oak 52	50 LVP 752	1220	180	8	●	●	●	10	2,2	18
	Charleston Oak 72	50 LVP 1172	1220	182	8	●	●	●	12	2,65	23
	Charleston Oak 78	50 LVP 1178	1220	182	8	●	●	●	12	2,65	23
	Charleston Oak 53	50 LVP 1153	1220	182	8	●	●	●	12	2,65	23
	Baltimore Oak 54	50 LVP 1254	1220	182	8	●	●	●	12	2,65	23
	MULTI	Texas Oak H71	50 LVRH 2471	912	228	8	●	●	●	A: 6-B: 6	2,5
Texas Oak H86		50 LVRH 2486	912	228	8	●	●	●	A: 6-B: 6	2,5	21
Texas Oak H54		50 LVRH 2454	912	228	8	●	●	●	A: 6-B: 6	2,5	21
Texas Oak M71		50 LVREM 2471	610	126	8	●	●	●	2	2,62	23,5
			1830	181	8				4		
			1220	126	8				2		
			1830	228	8				2		
Texas Oak M86		50 LVREM 2486	610	126	8	●	●	●	2	2,62	23,5
			1830	181	8				4		
			1220	126	8				2		
			1830	228	8				2		
Texas Oak M54		50 LVREM 2454	610	126	8	●	●	●	2	2,62	23,5
		1830	181	8				4			
		1220	126	8				2			
		1830	228	8				2			
Tile++	Rabat 94	50 LVT 1794	1205	302	8	●	●	●	6	2,18	18,79
	Rabat 90	50 LVT 1790	1205	302	8	●	●	●	6	2,18	18,79
Tile+	Aquila 50	50 LVTE 1850	610	457	8	●	●	●	8	2,23	18,69
	Lyra 57	50 LVTE 1857	610	457	8	●	●	●	8	2,23	18,69
	Columba 53	50 LVTE 1853	610	457	8	●	●	●	8	2,23	18,69
	Vela 54	50 LVTE 1854	610	457	8	●	●	●	8	2,23	18,69
	Mensa 58	50 LVTE 1858	610	457	8	●	●	●	8	2,23	18,69
Tile	Weathered Concrete O3	50 LVT 18O3	610	470	8	●	●	●	9	2,58	23,63
	Cosmic Copper 67	50 LVT 1567	610	470	8	●	●	●	9	2,58	23,63
	Polished Concrete 95	50 LVT 1695	610	470	8	●	●	●	9	2,58	23,63

81



COREtec®, the natural choice















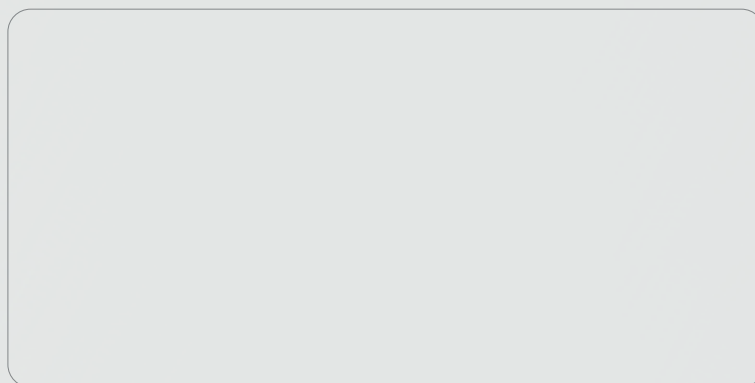








Warranty (Years) The warranty covers manufacturing defects and premature wear in the event of normal use.



Souverainestraat 27 - 9770 Kruisem (Belgium)
info@usfloors.be · www.coretecfloors.com